

Smart Chemical Compliance Testing (SCCT)

A proactive chemical
management solution -
ensuring chemical compliance

Your Challenges

Today, more chemicals are intentionally used in the manufacturing of products than ever before to impart certain properties to the products. As the use of chemicals continues to increase, consumer products are subject to a variety of regulatory requirements and standards set by the legislative parties and non-governmental organizations. The world of chemicals has become far more complex, but the testing methods have remained the same, as more than 100 different types of chemical tests may be required for a single product to meet its regulatory requirements. It is essential for manufacturers, importers or retailers selling consumer products to implement a more comprehensive and cost-effective chemical management system to meet regulatory requirements and compete in the marketplace.

What is SCCT?

To address the growing concern over the use of hazardous chemicals in consumer products, Eurofins-MTS believed that testing hundreds of restricted chemicals in an efficient, and accurate manner was necessary for the supply chain and retailers to comply with the evolving global chemical regulations. Based on our decades of experience and expertise, Eurofins-MTS has developed an innovative testing methodology known as “Smart Chemical Compliance Testing (SCCT)” that gives you a distinct competitive advantage by enabling you to reduce overall testing and production costs while decreasing turnaround time due to test failures.

SCCT provides a faster, cost-effective and proactive solution to support global chemical

compliance. With a single analysis, it is able to identify the majority of hazardous substances restricted or banned by individual retailers, multi-country regulations, and NGO focus groups in the consumer products industry. Because SCCT identifies most hazardous substances before they are even used in production - unwanted chemicals that could inadvertently enter the supply chain can be reduced by up to 90%, and up to 70% of testing costs can be saved while requiring only half the sample size.

SCCT is the perfect chemical management solution for monitoring RSL and SVHC identified by REACH, CPSIA, CA PROP 65, ZDHC MRS, CHCC, US state laws and more, giving you more visibility into your supply chain.

	Traditional RSL	SCCT
Sampling/ Testing	Normally 3 composite testing and multiple chemical reagents are needed. It measures 1 chemical per test.	Higher number of composites based on weight proportion can be done. It measures 10+ chemicals per test.
Sample Size Required	6 pieces of finished products	1-2 pieces of finished products
Test Report	5 to 7 business days	3 to 5 business days
Result Interpretation	Each RSL test provides 1 chemical result for each component tested and reporting may be comparatively more complex.	Provides a complete “chemical profile” for the whole sample. Test results will show Pass/ Fail to industry, personalized or RSL specifications.
Persistence	Low: Reactive solution	High: Proactive solution
Testing Cost	High Cost: Can cost up to \$1,000 per item	Cost-effective: Up to 70% cost savings in testing

Get in touch today for more information!



www.mts-global.com



enquiry@mts-global.com



Modern Testing Services



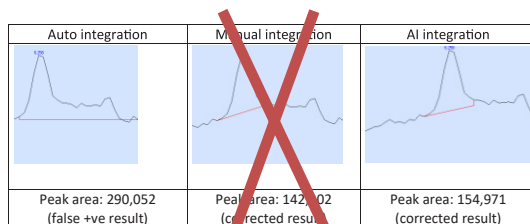
Subscribe to our Newsletter!

Integration of AI Machine Learning

SCCT uses GC/MS screening technique as one of its main solutions, enabling the detection of more than 400+ globally restricted substances without having to test chemicals individually.

In 2020, Eurofins-MTS successfully integrated a fully auditable and holistic AI machine learning system into GC/MS screening data analysis, replacing manual integration during chemical data analysis. This integration has accelerated the SCCT data analysis process by 25%, with integration accuracy close to 100%. In addition, the consistency of test results has been improved by eliminating variability in results caused by human interpretation.

By optimizing AI in GC/MS screening data analysis and integrating with the LIMS system, SCCT data analysis is now processed within seconds with automated report processing, providing test reports to our customers much faster with highest accuracy and consistency.



Raw data
feed to the
AI software

Integrated result
comes out
automatically in sec.



SCCT analyzes Manufacturing Restricted Substances List (MRSL) for virtually all consumer products including, but not limited to:

- Toys, Arts & Crafts
- Juvenile Products
- Furniture Products
- Textiles & Apparel
- Footwear & Leather Goods
- Cosmetics & Beauty Products
- Electronics & Electrical Products
- Kitchenware & Food Contact Materials
- Paints/ Inks/ Solvents
- And more!

SCCT monitors RSL and SVHC identified by:

- AFIRM RSL
- CA PROP 65
- EU REACH Regulation
- EU RoHS Directive
- EU POPs Regulation
- Chemicals of High Concern to Children (CHCC)
- Global Organic Textile Standard (GOTS)
- The National GB Standard of China
- US CPSIA
- US State Bills
- ZDHC MRSL
- And more!



Scan the QR code to watch a video explaining Smart Chemical Compliance Testing (SCCT)



About Us

Modern Testing Services ("MTS") was founded in 2006 as a quality assurance company specializing in testing, inspection and certification of consumer products. MTS operates without the pressure of short-term financial results and believes in long-term relationships built on trust, commitment and transparency. Today, MTS is a trusted partner to many leading brands, retailers, and manufacturers around the world, providing accurate, efficient and customized solutions at every point in the supply chain to ensure product quality, brand protection and customer satisfaction.

MTS joined Eurofins in November 2021. The synergy between MTS and Eurofins enables an expanded global service network in more than 35 locations in over 20 countries, as well as more robust technical expertise from over 2,000 dedicated and knowledgeable employees with additional product category coverage and more comprehensive services.



Modern Testing Services

EUROPE & AMERICAS

France | Aix-en-Provence

Germany | Augsburg

Germany | Wilsum

Italy | Como

Spain | Alicante

Turkey | Istanbul

United Kingdom | Leeds

United Kingdom | Northampton

United States | Boston

United States | Seattle

ASIA

Bangladesh | Dhaka

Cambodia | Phnom Penh

China | Hangzhou

China | Hong Kong

China | Dongguan

China | Shanghai

China | Shenzhen

China | Qingdao

China | Xiamen

India | Bangalore

India | New Delhi

India | Noida

India | Tirupur

Indonesia | Jakarta

Pakistan | Lahore

South Korea | Seoul

Sri Lanka | Wattala

Thailand | Bangkok

Vietnam | Ho Chi Minh City

 www.mts-global.com

 enquiry@mts-global.com